



Leader in Can Liners and Custom Bags



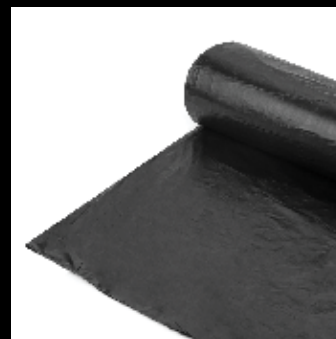
ALUF PLASTICS®

OUR REPUTATION IN EVERY BAG

CATALOG

INTEGRITY INNOVATION

SUPERIOR PRODUCTS & SERVICE SINCE 1977



Inc. 5000

SCS certified
MINIMUM 80% RECYCLED CONTENT
10% POST-CONSUMER • 70% PRE-CONSUMER

ISSA
Best Customer Service Award Winner

certified WBENG
WOMEN'S BUSINESS ENTERPRISE

MADE IN USA



Dear Valued Customer,

Welcome and thank you for your interest in our company.

Aluf Plastics is a minority, woman-owned (WBENC Member) manufacturer of custom, retail and private label trash bags. We've been in business under the same ownership since 1977 and maintain state-of-the-art facilities in Orangeburg, NY and Sulphur Springs, TX.

We've grown into one of the largest manufacturing and blown-film extrusion powerhouses in North America and yet maintain that personal one-on-one, individualized relationship with each and every customer.

Please take a moment to peruse though this catalog. Have questions? Need more information? Have a special request? Our knowledgeable Sales team is standing by to provide you with the answers and the attention you deserve.

We appreciate the fact that you've chosen to do business with Aluf Plastics and pledge to consistently serve you with the highest levels of dedication, reliability and professionalism.

Thanks again for you patronage.

Yours truly,

Susan Rosenberg

Chief Executive Officer





PICK A BAG. ANY BAG.

ALUF PLASTICS IS ALL ABOUT PROVIDING **EXCELLENT SERVICE** AND MANY TOP QUALITY PRODUCTS AT **COMPETITIVE PRICES**. FROM DUAL MANUFACTURING FACILITIES ROLLING OUT **CAN LINERS** OF ALL SIZES, TO **MULTIPLE WAREHOUSES** STOCKING OVER **500 READY-TO-SHIP SKUS** FOR IMMEDIATE DELIVERY, ALUF'S **STERLING REPUTATION** IS INSIDE EVERY BAG... **NO MATTER WHICH BAG YOU CHOOSE.**

Index (SORTED ALPHABETICALLY)

Antimicrobial	8
Film Descriptions	6
General Info	4
Green/Environmental	9
Labeling	7
Sustainability	5

LOW DENSITY

ROLLS	FLAT
BLACK	
Flap Crown Top Liners 15	A-T (Star) 17
RCM COEX Supertuff® 14	CXP COEX Supertuff® 12
Roll (RL) Series 17	VCX COEX Supertuff® 13
Tubing 19	PG6/NY (Gusset) 16

Blue Recycling	22
Clear Coreless	21
Clear Flatpack	20
Compactor Bags	19
Compostable Bags	27
Contractor Bags	19
Covers: Pallet, Dry Wall/ Lumber Yard	31
Curbside Receptacle Liners	18
Draw Tape	25
Drum Liners	18
Food Bags	28
Mattress Bags	25
Packaging / Industrial	29
Poly Sheeting	31
Red Infectious Waste	26
Super Hexene	24
Table Covers	30
White Bags	23

HIGH DENSITY

SCR Source Reduction (GOOD)	11
HCR High Density (BETTER)	10
PCM Pro-Lene® (BEST)	11

INDEX CROSS REFERENCE

Low Density	32
High Density	33
Retail	34

TRAINING

Bag Choosing Guide	35
Converting Gauge	36
Calculating Gauge & Net Weight	37
Frequently Asked Questions	38
Terms and Conditions	39

General Information



Aluf Manufacturing Facility
Orangeburg, New York



Aluf Manufacturing Facility
Sulphur Springs, Texas

General Info: Aluf Plastics extrudes and converts mono- and multi-layer bag products for industrial packaging and can liner applications. Since inception in 1977, Aluf Plastics has grown steadily with advancements of film and bag products. We offer a full line of commodity polyethylene as well as superior products of high performance resin, which reduces cost over traditional polyethylene products.

Plant Locations: Aluf’s East Coast headquarters and production facility is located in Orangeburg, New York, only 5 minutes from the New York/New Jersey border and Route 287/87 Interstate highways.

The Aluf Plastics Southwest division features a manufacturing and blown-film extrusion plant in Sulphur Springs, Texas that expands distribution to customers throughout the region.

Physical Data: Aluf Plastics runs 90+ extrusion lines between the New York and Texas plants with a total production space of approximately 500,000+ square feet.

	Minimum Gauge	Maximum Gauge	Minimum Width	Maximum Width
Prime:	.0004	6 mil	8” (16” Tube)	99” (178” gusseted)
Repro:	.0008	6 mil	8” (16” Tube)	99” (178” gusseted)
HD:	5 mic	25 mic	17”	52”

Converted Products: Minimum Bag Length: 12” Maximum Bag Length: Unlimited

- Capabilities:**
- Individually Folded
 - Cored and Coreless rolls
 - Flatpack, Individually cut
 - Custom Sheets and Sheeting
 - Draw Tape & E-Z Tie Flaps
 - Gusset, Flat, Star Seal
 - Corona, ‘print’ treating
 - 2 Color Random Print

Our **experienced** team is standing by to provide you with the **answers** you need, and the **support** your business deserves.



Sustainability and Aluf

Aluf Plastics supports and invests in sustainable manufacturing and recycling solutions.

WHAT IS SUSTAINABILITY?

The quality of caring for the environment by protecting natural resources, and supporting long-term ecological balance.

ALUF'S CONTRIBUTION TO SUSTAINABILITY INCLUDES



REDUCE

We minimize the amount of plastic sent to landfills by recycling over 50 million pounds a year.

We are one of the largest recyclers in New York State.



REUSE

We reuse over 25,000 gallons of waste water each week. Almost all inbound pallets are reused for shipments.



RECYCLE

60% of our product consists of content made from recycled material. Our packaging is 100% recyclable.



RECLAIM

We reclaim and recycle over 8 million pounds of corrugate each year. We've implemented in-house collection programs for office paper, cardboard, electronics and plastics manufacturing scrap.

Film Designation

HIGH DENSITY Aluf Plastics HDPE film is a blend of high molecular weight, high density resins. High Density offers superior dart strength performance over all our other products, and is the ideal material to be used for non-sharp objects.

SUPER HEXENE Our strongest material; a linear low proprietary resin blend, that provides the strength necessary to replace conventional liner grade film, allowing down gauging up to 50% in many applications..

HEXENE A high quality blend of linear low resin used in applications where other materials may not be suitable. This resin blend is used to offset the blocking and stretch of LDPE, while maintaining strength and impact resistance; allowing down gauging of up to 35% in many applications.

BUTENE A linear low resin blend that can usually be down-gauged 20% when replacing a conventional liner grade film. This film is used for applications where other materials may not be suitable. This resin blend is used to offset the blocking and stretch of the LDPE while maintaining strength and impact resistance.

BUTENE HIGH CLARITY The advantages of Butene, with the added benefit of higher clarity, when required.

CXP COEX SUPERTUFF® Three-layer co-extrusions, formulated for a higher performance rate and produced with a minimum of 10% post consumer and 80% recycled material. CXP contains Antimicrobial protection and qualifies for LEED certification.

METALLOCENE/ALULENE BLEND Our exclusive blend of linear low recycled material and super strength prime resins. This material typically enables the user to utilize a bag 10% thinner, yet equal or stronger than a traditional LDPE bag, at a competitive price.

REPRO PLASTIC Aluf repro has consistently strong characteristics as it is a blend of our own virgin resins and outside recycled content. However, natural or clean film bags made from repro are somewhat cloudier than conventional industrial liner film, although contact clarity is sufficient for easy product identification. Repro plastic is not recommended for applications requiring FDA certification. 10% Post-Consumer additive is available upon request for most products.

ANTIMICROBIAL Antimicrobial Protection provides an added benefit by inhibiting the growth of odor-causing bacteria on the inside and outside surfaces of can liners. Aluf High Density products, PCM Pro-Lene and HCR Series as well as our Lo-Density LEED CXP and RCM products are manufactured with Antimicrobial Protection.

BIODEGRADABLE & COMPOSTABLE Aluf compostable and biodegradable bags are BPI Certified and made with natural polymers, including potato and corn starch and meet ASTM D6400 specifications. Bags are able to decompose under specific conditions of light, moisture and oxygen.

Custom Labeling Options

CO-LABEL OPTION

A 3x4 co-label can be applied to all stock products and may contain your reorder information on a standard label or a custom reorder label with your logo and company information.

Please allow five days lead time.



STANDARD CO-LABEL

3x4 label with 5 lines X 20 characters per line.



ADVANCED CO-LABEL

3x4 Label with customer logo and reorder info.

CUSTOM LABEL OPTION

A fully custom 3x4, 4x6 or 4x13 black & white label can be applied to all custom product, with a minimum order of 250 cases per item.

Please allow 3-4 weeks lead time.



Advanced 4x6 custom label with customer logo, address and bag specs.



Advanced 4x13 custom label with customer logo, address and bag specs.

PLEASE NOTE: All boxed red areas on the labels are Aluf internal data and cannot be moved or removed from any of Aluf custom or co-labels.

IT'S NOT ABOUT WHAT'S **IN** THE BAG, IT'S ABOUT WHAT'S **ON** THE BAG”



Antimicrobial Canliner Manufacturer

Antimicrobial Protection is well known for inhibiting the growth of odor-causing bacteria. Antimicrobial trash bags from Aluf provide important protection to help differentiate your offering with a solution that reduces unwanted bacteria.

Antimicrobial Protection is infused into the bag during manufacturing and will not wash off or wear away. It provides continuous protection for the duration of its use.

The antimicrobial feature can be added to any custom product.



Antimicrobial Protection is standard in these Aluf Commercial Product Lines:

HIGH DENSITY



PRO-LENE® PCM

HCR SERIES

LOW DENSITY



RCM SERIES

COEX CXP POST CONSUMER

THE BAG THAT SAVES YOU GREEN

CXP COEX Supertuff®

Aluf is at the forefront of the plastics industry in providing innovative solutions for a better environment. Aluf's **CXP COEX SUPERTUFF®** line uses a proprietary tri-laminate process. Our **COEX®** line of bags are approximately 25% thinner than competitor's bags, yet provide superior strength and durability. Aluf's Environmental Best Practices mandate strict adherence to the highest standard of environmental sustainability.

We consistently maintain the 4-R principle.

- Heavy gauge equivalent
- Stronger 3-ply liner
- Green – post-consumer
- Anti-microbial protection
- Cost-efficient
- Individually folded



REDUCE

We minimize the amount of material used in production.

REUSE

Most internally generated waste, including wastewater and cardboard is reused.

RECYCLE

60% of our product line consists of content made from recycled material.

RECLAIM

We implemented ambitious effective collection programs.

COEX Supertuff CXP® bags qualify for LEED-MR 4.1 and 4.2 credits.

This line is produced from 80% recycled materials with 10% post consumer. They are treated with Antimicrobial Protection, a feature that inhibits the growth of odor-causing bacteria on both the inside and outside surfaces of bags.



IDEAL FOR										FEATURES			
	JANITORIAL	INDUSTRIAL	MUNICIPAL	HEALTHCARE	INSTITUTIONAL	FOOD SERVICE	GROCERY	CONTRACTING	HOSPITALITY		STAR SEAL	INDIVIDUALLY FOLDED	3 PLY

Source Reduction SCR High Density Bags

Source Reduction SCR High Density Bags, our most cost-efficient general stock bags, are perforated coreless rolls. SCR Liners use less plastic which is good for the environment, yet they are strong enough and sized appropriately.

- Metalocene high density blend, for superior stretch ability
- Up to 10% recycled content
- Less polyethylene than traditional liners



IDEAL FOR						FEATURES			
	JANITORIAL	INDUSTRIAL	HEALTHCARE	INSTITUTIONAL	HOSPITALITY		STAR SEAL	CORELESS ROLLS	PERFORATED ROLLS



HCR High Density

HCR Hi-Lene is our preferred value line, available in a wide range of industry standard sizes and gauges.

These bags have the additional benefit of Antimicrobial protection, which inhibits the growth of odor-causing bacteria on the inside and outside surfaces of the bag.

- Value Line
- Coreless Rolls
- Leak-Proof Star Seal



FEATURES



STAR SEAL



PERFORATED ROLLS

IDEAL FOR



JANITORIAL



INDUSTRIAL



MUNICIPAL



HEALTHCARE



INSTITUTIONAL

ITEM CODE	SIZE	GALLON	GAUGE RATING	PACK	INNER PACK Rolls/Per Roll	CASE LAYER	PALLET
PC-171806C***	17x18	4	6	2,000	40/50	10	100
PC-202206C***	20x22	7	6	2,000	40/50	10	100
HCR-242406C	24x24	7-10	6	1,000	20/50	10	100
HCR-242408C*	24x24	7-10	8	1,000	20/50	10	100
HCR-242708C	24x27	12	8	1,000	20/50	10	100
HCR-243306C*	24x33	12-16	6	1,000	20/50	10	100
HCR-243308C*	24x33	12-16	8	1,000	20/50	10	100
HCR-303708C	30x37	20-30	8	500	20/25	10	100
HCR-303710C	30x37	20-30	10	500	20/25	10	70
HCR-303713C	30x37	20-30	13	500	20/25	10	70
HCR-303716C*	30x37	20-30	16	500	20/25	10	70
HCR-334011C	33x40	33	11	500	20/25	10	70
HCR-334013C	33x40	33	13	500	20/25	10	70
HCR-334016C*	33x40	33	16	250	10/25	10	70
HCR-334022B**	33x40	33	22	250	10/25	10	70
HCR-366017C	36x60	50-55	17	200	8/25	10	70
HCR-386014C	38x60	55-60	14	200	8/25	10	70
HCR-386017C*	38x60	55-60	17	200	8/25	10	70
HCR-386022C*	38x60	55-60	22	150	6/25	10	70
HCR-404812C	40x48	45	12	250	10/25	10	70
HCR-404814C	40x48	45	14	250	10/25	10	70
HCR-404816C*	40x48	45	16	250	10/25	10	70
HCR-404822C*	40x48	45	22	150	6/25	10	70
HCR-434816C	43x48	56	16	200	8/25	10	70
HCR-434822C*	43x48	56	22	150	6/25	10	70

*Available in black. Change 'C' to 'B' i.e. HCR-434822B.

** Stock available in BLACK only

***No Antimicrobial
Non-stock items, min 2 SKIDs

PCM Pro-Lene®

Premium High Density can liners with added Antimicrobial Protection which inhibits the growth of odor-causing bacteria on the inside and outside surfaces of the bag.

- Extra Virgin Film
- Leak-proof Star Seal
- Coreless Rolls



ITEM CODE	SIZE	GALLON	GAUGE RATING	PACK	INNER PACK Rolls/Per Roll	CASE LAYER	PALLET
PC-171806C*	17x18	4	6	2,000	40/50	10	100
PC-202206C*	20x22	7	6	2,000	40/50	10	100
PCM-243308C	24x33	12-16	8	1,000	20/50	10	100
PCM-303710C	30x37	20-30	10	500	20/25	10	70
PCM-303713C	30x37	20-30	13	500	20/25	10	70
PCM-334016C	33x40	33	16	250	10/25	10	70
PCM-386017C	38x60	55-60	17	200	8/25	10	70
PCM-386022C	38x60	55-60	22	150	6/25	10	70
PCM-404814C	40x48	45	14	250	10/25	10	70
PCM-404816C	40x48	45	16	250	10/25	10	70
PCM-404822C	40x48	45	22	150	6/25	10	70
PCM-434816C	43x48	56	16	200	8/25	10	70
PCM-434822C	43x48	56	22	150	6/25	10	70

*No Antimicrobial

SCR Source Reduction

Metalocene High Density blend for super stretch. Up to 10% recycled content. Less polyethylene than traditional liners yet strong enough to "get the job done".

- Cost Efficient
- Leak-proof Star Seal
- Coreless Rolls



ITEM CODE	SIZE	GALLON	GAUGE RATING	PACK	INNER PACK Rolls/Per Roll	CASE LAYER	PALLET
PC-171806C	17x18	4	6	2,000	40/50	10	100
PC-202206C	20x22	7	6	2,000	40/50	10	100
SCR-242406C	22x23	7-10	6	1,000	20/50	10	100
SCR-243306C	22x31	12-16	6	1,000	20/50	10	100
SCR-243308C	22x31	12-16	8	1,000	20/50	10	100
SCR-303710C*	29x36	20-30	10	500	20/25	10	70
SCR-303713C	29x36	20-30	13	500	20/25	10	70
SCR-334016C	32x38	33	16	250	10/25	10	70
SCR-334022C	32x38	33	22	250	10/25	10	70
SCR-386017C	37x58	55-60	17	200	8/25	10	70
SCR-386022C	37x58	55-60	22	150	6/25	10	70
SCR-404816C*	39x46	45	16	250	10/25	10	70
SCR-404822C*	39x46	45	22	150	6/25	10	70

*Available in black

FEATURES



STAR SEAL



PERFORATED ROLLS

IDEAL FOR



JANITORIAL



INDUSTRIAL



MUNICIPAL



HEALTHCARE



INSTITUTIONAL



HOSPITALITY

HIGH DENSITY

COEX

LOW DENSITY
BLACK REPRO

LOW DENSITY
VIRGIN / BLEND

SPECIALTY ITEMS

PACKAGING

CXP COEX Supertuff®

- Cost-effective “Supertuff” bag
- Guaranteed quality and durability
- 3-ply construction Black and Gray
- Antimicrobial protection
- Minimum 80% recycled content; minimum 10% post-consumer content
- Reduces your carbon footprint by as much as 20%
- Individually folded



Supports Municipal, State and Federal LEED initiatives



FEATURES



STAR SEAL



INDIVIDUALLY FOLDED

IDEAL FOR



JANITORIAL



INDUSTRIAL



MUNICIPAL



HEALTHCARE



INSTITUTIONAL



HOSPITALITY



ITEM CODE	SIZE	GALLON	GAUGE RATING	PACK	CASE LAYER	PALLET
CXP-2433X*	15x9x33	12-16	1.25	250	10	80
CXP-2433X 500*	15x9x31	12-16	1.25	500	10	70
CXP-2945	29x45	26	1.25	200	10	100
CXP-3036X	30x36	20-30	1.5	100	10	100
CXP-3036XXX	30x36	20-30	2.0	100	10	100
CXP-3339X	33x39	33	1.5	100	10	100
CXP-3339XX	33x39	33	1.7	100	10	100
CXP-3339XXX	33x39	33	2.0	100	10	100
CXP-3347X	33x47	40-45	1.5	100	10	80
CXP-3858X	38x58	55-60	1.5	100	10	70
CXP-3858XX	38x58	55-60	1.7	100	10	70
CXP-3858XXX	38x58	55-60	2.0	100	10	70
CXP-4047X	40x47	45	1.5	100	10	100
CXP-4047XX	40x47	45	1.7	100	10	80
CXP-4047XXX	40x47	45	2.0	100	10	70
CXP-4347X	43x47	56	1.5	100	10	80
CXP-4347XX	43x47	56	1.7	100	10	70
CXP-4347XXX	43x47	56	2.0	100	10	70

*Gusset not individually folded



VCX COEX Supertuff®

VCX COEX Supertuff Bags are a highly engineered tri-laminate product, that incorporates extra strength at lower gauges, providing an advantageous cost compared to traditional black bags. These bags are star-sealed for leak-proof protection.

- **Tri-laminate 2-color film** – provides superior strength and elasticity for exceptional performance at a value price
- **COEX technology** – uses less PE for improved sustainability
- **Star Seal** – provides leak-proof bottom
- **Minimum 80% recycled materials**



FEATURES



STAR SEAL



INDIVIDUALLY FOLDED

IDEAL FOR



JANITORIAL



INDUSTRIAL



MUNICIPAL



HEALTHCARE



INSTITUTIONAL



HOSPITALITY



FOOD SERVICE



GROCERY



CONTRACTING

HIGH DENSITY

COEX

LOW DENSITY
BLACK REPRO

LOW DENSITY
VIRGIN / BLEND

SPECIALTY ITEMS

PACKAGING

ITEM CODE	SIZE	GALLON	GAUGE RATING	PACK	CASE LAYER	PALLET
VCX-3036	30x36	20-30	1.25	100	10	100
VCX-3036X	30x36	20-30	1.5	100	10	100
VCX-3339	33x39	33	1.25	100	10	100
VCX-3339X	33x39	33	1.5	100	10	100
VCX-3339XX	33x39	33	1.7	100	10	100
VCX-3339XXX	33x39	33	2.0	100	10	100
VCX-3347XXX	33x47	40-45	2.0	100	10	80
VCX-3658X	36x58	50-55	1.5	100	10	80
VCX-3858	38x58	55-60	1.25	100	10	80
VCX-3858X	38x58	55-60	1.5	100	10	80
VCX-3858XX	38x58	55-60	1.7	100	10	70
VCX-3858XXX	38x58	55-60	2.0	100	10	70
VCX-4047	40x47	45	1.25	100	10	80
VCX-4047X	40x47	45	1.5	100	10	80
VCX-4047XX	40x47	45	1.7	100	10	80
VCX-4047XXX	40x47	45	2.0	100	10	70
VCX-4347	43x47	56	1.25	100	10	80
VCX-4347X	43x47	56	1.5	100	10	80
VCX-4347XXX	43x47	56	2.0	100	10	70

WE SHIP ALL STOCK PRODUCT WITHIN 72 HOURS



800-394-BAGS (2247) | INFO@ALUFPLASTICS.COM

RCM COEX Supertuff®

- Guaranteed quality and durability
- 3-ply construction
- Antimicrobial protection
- Minimum 80% recycled content
- Green product without added cost
- Reduces your carbon footprint by as much as 20%



FEATURES



STAR SEAL



PERFORATED ROLLS

IDEAL FOR



JANITORIAL



INDUSTRIAL



MUNICIPAL



HEALTHCARE



INSTITUTIONAL



HOSPITALITY

ITEM CODE	SIZE	GALLON	GAUGE RATING	PACK	INNER PACK Rolls/Per Roll	CASE LAYER	PALLET
RCM-2944	29x44	26	1.25	200	10/20	10	100
RCM-3036	30x36	20-30	1.25	100	5/20	10	100
RCM-3036X	30x36	20-30	1.5	100	5/20	10	100
RCM-3339	33x39	33	1.25	100	5/20	10	100
RCM-3347X	33x47	40-45	1.5	100	5/20	10	100
RCM-3853	38x53	44	1.25	100	5/20	10	100
RCM-3853X	38x53	44	1.5	100	5/20	10	100
RCM-3853XXX	38x53	44	2.0	100	5/20	10	70
RCM-3858	38x58	55-60	1.25	100	5/20	10	100
RCM-3858X	38x58	55-60	1.5	100	5/20	10	80
RCM-3858XX	38x58	55-60	1.7	100	5/20	10	70
RCM-3858XXX	38x58	55-60	2.0	100	5/20	10	70
RCM-4047	40x47	45	1.25	100	5/20	10	100
RCM-4047X	40x47	45	1.5	100	5/20	10	100
RCM-4047XX	40x47	45	1.7	100	5/20	10	80
RCM-4047XXX	40x47	45	2.0	100	5/20	10	70
RCM-4347X	43x47	56	1.5	100	5/20	10	100
RCM-4347XXX	43x47	56	2.0	100	5/20	10	70



Alufs' various can liners have been used inside the White House and aboard Air Force One.



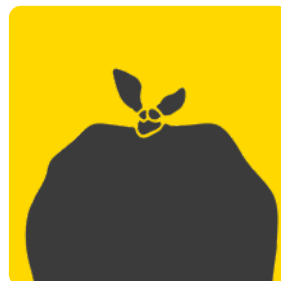
Crown Top Liners

Royal Crown Top Liners with E-Z Tie Closures make this bag easier to tie, lift and carry. Bags are made with a blend of prime and reprocessed material. RCT (Royal Crown Top) liners offer exceptional performance while saving time, money and the environment.

- Crown-shaped top with E-Z tie closure
- Easier to tie, lift and carry
- Exceptional performance and source reduction
- Saves time, money and the environment



ITEM CODE	SIZE WITH FLAP	GALLON	GAUGE RATING	PACK	INNER PACK Rolls/Per Roll	CASE LAYER	PALLET
RCT-30	30x36	30	1.25	100	5/20	10	100
RCT-33	33x39	33	1.25	100	5/20	10	100
RCT-33X	33x39	33	1.5	100	5/20	10	100
RCT-33XXX	33x39	33	2.0	100	5/20	10	100
RCT-32X	33x46	40-45	1.5	100	5/20	10	100
RCT-60	38x58	55-60	1.25	100	5/20	10	100
RCT-60X	38x58	55-60	1.5	100	5/20	10	100
RCT-60XX	38x58	55-60	1.7	100	5/20	10	70
RCT-60XXH	38x58	55-60	2.0	50	5/10	10	100
RCT-60XXX	38x58	55-60	2.0	100	5/20	10	70
RCT-45X	40x46	45	1.5	100	5/20	10	100
RCT-45XX	40x46	45	1.7	100	5/20	10	100
RCT-45XXX	40x46	45	2.0	100	5/20	10	70
RCT-56XX	43x46	56	1.7	100	5/20	10	100



FEATURES



STAR SEAL



PERFORATED ROLLS

IDEAL FOR



JANITORIAL



INDUSTRIAL



MUNICIPAL



HEALTHCARE



INSTITUTIONAL



HOSPITALITY



FOOD SERVICE



GROCERY



CONTRACTING

HIGH DENSITY

COEX

LOW DENSITY
BLACK REPRO

LOW DENSITY
VIRGIN / BLEND

SPECIALTY ITEMS

PACKAGING

PG6/NY Series

Made from at least 90% recycled materials, these extra-thick BLACK opaque bags are reliably strong, a consistent and steady favorite. They open easily and are packed in dispenser cartons for easy storage.

- Extra-thick
- Black opaque
- Gusset, Individual Fold



FEATURES



GUSSET SEAL



INDIVIDUALLY FOLDED

IDEAL FOR



JANITORIAL



INDUSTRIAL



MUNICIPAL



INSTITUTIONAL



CONTRACTING

ITEM CODE	SIZE	GALLON	GAUGE	PACK	CASE LAYER	PALLET
PG6-2420*	15x9x23	7-10	1.2	500	10	70
PG6-3320*	15x9x31	12-16	1.2	500	10	60
PG6-3720	16x14x36	20-30	1.2	250	10	70
PG6-3740	16x14x36	20-30	1.4	100	10	100
PG6-3751	16x14x36	20-30	1.5	100	10	90
NY37XX	16x14x36	20-30	2.0	100	10	100
PG6-4040	23x10x39	33	1.4	100	10	100
PG6-4051	23x10x39	33	1.5	100	10	100
NY40X	23x10x39	33	1.7	100	10	100
PG6-4060	23x10x39	33	2.0	100	10	70
NY40XXX	23x10x39	33	2.3	100	10	70
PG6-4640	23x17x46	45	1.4	100	10	100
PG6-4651	23x17x46	45	1.5	100	10	70
PG6-4650	23x17x46	45	1.6	100	10	70
NY48X	23x17x46	45	1.7	100	10	70
PG6-4660	23x17x46	45	2.0	100	10	60
NY48XXX	23x17x46	45	2.3	100	10	60
PG6-4751	23x20x46	56	1.5	100	10	70
PG6-4750	23x20x46	56	1.6	100	10	70
PG6-5851	22x14x58	50-55	1.5	100	10	70
NY58X	22x14x58	50-55	1.7	100	10	70
PG6-5860	22x14x58	50-55	2.0	100	10	60
NY58XXX	22x14x58	50-55	2.3	100	10	50
PG6-6051	22x16x58	55-60	1.5	100	10	70
PG6-6050	22x16x58	55-60	1.6	100	10	70
NY60PLUS	22x18x55	55-60	1.8	100	10	60
PG6-6060	22x16x58	55-60	2.0	100	10	60
NY603X	22x16x58	55-60	2.7	50	10	70
PG6-6551*	26x24x48	65	1.5	50	10	100
PG6-6550*	26x24x58	65	1.6	50	10	100
PG6-9660*	32x29x68	95	2.0	32	10	70

*Not individually folded

A-T SERIES

Expanding our stock offering of thick 'PG/NY' line, the 'A-T' Series is made from Aluf's specially blended recycled film. With great performance for tough jobs, bags are packed in easy-to-use white dispenser cartons and are available in selected sizes.

- Leak-proof Star Seal
- Individually folded



FEATURES



STAR SEAL



INDIVIDUALLY FOLDED

ITEM CODE	SIZE	GALLON	GAUGE	PACK	CASE LAYER	PALLET
A-T2423H*	15x9x23	7-10	0.8	500	10	100
A-T2432H*	15x9x32	12-16	0.8	500	10	70
A-T4047H	40x46	45	1.0	100	10	100
A-T3858H	38x58	55-60	1.0	100	10	100
A-T4347XXH	43x47	56	1.6	100	10	70

* Gusset seal, bulk folded

RL SERIES

Let's Roll? That's where the RL Series steps in. This line provides the strength and reliability of the PG Series, but with the added benefit of a star seal coreless perforated roll.

- Leak-proof Star Seal
- Black coreless rolls



FEATURES



STAR SEAL



PERFORATED ROLLS

IDEAL FOR



JANITORIAL



INDUSTRIAL



MUNICIPAL



HEALTHCARE



INSTITUTIONAL



HOSPITALITY

ITEM CODE	SIZE	GALLON	GAUGE	PACK	INNER PACK Rolls/Per Roll	CASE LAYER	PALLET
RL-2423H	24x23	7-10	0.8	500	10/50	10	70
RL-2432H	24x32	12-16	0.8	500	10/50	10	100
RL-3036XH	30x36	20-30	1.2	100	5/20	10	100
RL-3339H	33x39	33	1.0	100	5/20	10	100
RL-3339XH	33x39	33	1.2	100	5/20	10	100
RL-3339XXH	33x39	33	1.5	100	5/20	10	90
RL-3347XH	33x46	40-45	1.2	100	5/20	10	100
RL-3646XH	36x46	44	1.2	100	5/20	10	100
RL-4047XH	40x46	45	1.2	100	5/20	10	100
RL-4047XXH	40x46	45	1.5	100	5/20	10	70
RL-404720	40x46	45	2.0	50	5/10	10	100
RL-4347H	43x47	56	1.0	100	5/20	10	100
RL-4347XH	43x47	56	1.2	100	5/20	10	100
RL-4347XXH	43x47	56	1.5	100	5/20	10	70
RL-434720	43x47	56	2.0	50	5/10	10	100
RL-3858H	38x58	55-60	1.0	100	5/20	10	100
RL-3858XH	38x58	55-60	1.2	100	5/20	10	70
RL-3858XXH	38x58	55-60	1.5	100	5/20	10	70
RL-385820	38x58	55-60	2.0	50	5/10	10	100

WE SHIP ALL STOCK PRODUCT WITHIN 72 HOURS



800-394-BAGS (2247) | INFO@ALUFPLASTICS.COM

Curbside Receptacle Liners

Curbside Receptacle Liners are specifically designed to fit standard 65 and 95 gallon roll out receptacles. Made from low density polyethylene for strength and flexibility.

Curbside Receptacle Liners are available in Black and Clear for general refuse and building materials and are gauged accordingly.

- Recycled liner, low density polyethylene
- Puncture and tear resistant
- Designed to fit standard 65 and 95 gallon curbside receptacles



ITEM CODE	SIZE	GALLON	GAUGE	COLOR	PACK	CASE LAYER	PALLET
PG6-6551	26x24x48	65	1.5	Black	50	10	100
PG6-6550	26x24x58	65	1.6	Black	50	10	100
COM48	26x24x48	65	2.7	Black	100	6	36
96G15CL	32x29x68	95	1.5	Clear	32	10	100
PG6-9660	32x29x68	95	2.0	Black	32	10	70



Drum Liners

Aluf Drum Liners are available in a 55 gallon size with a 3 mil thickness that is ideal for heavy duty use.

- Black
- Star Seal
- Individually folded



ITEM CODE	SIZE	GALLON	GAUGE	COLOR	PACK	CASE LAYER	PALLET
UL 3MDRUM	38x58	55-60	3.0	Black	40	10	70

COMPACTOR/CONTRACTOR



Black Tubing and Compactor Bags

Maintaining our continual commitment to the big city market, we have identified and stock the most popular Compactor Bags and Tubing sizes for your convenience. Tubing can be sized to any length by simply cutting and twist-tying the ends. Manufactured from a rugged blend of reprocessed material in an extra heavy thick gauge. Packed in a brown carton on a 3" core.

FEATURES



GUSSET SEAL



3" CORE ROLLS

ITEM CODE	SIZE	GALLON	GAUGE	PACK	CASE LAYER	PALLET	FEET/ROLL
COM48	26x24x48	65	2.7	100	6	36	-
TUB29	29	tubing	4.0	269'	7	49	269
TUB30	30	tubing	4.0	260'	7	49	260
TUB32	32	tubing	4.0	244'	7	49	244

Contractor Bags

We manufacture these contractor bags from the highest quality reprocessed resin with a tubular construction and a flat bottom seal. These liners have superior strength and are packed in retail dispenser cartons.



PIC #	ITEM CODE	SIZE	GAUGE	COLOR	PACK	CASE LAYER	PALLET	PACK TYPE	UNITS/MASTER
1	3MCON20	32x46	3.0*	BLACK	20	36	360	Rolls/Flaps	
2	COMMANDER 42-28 2Mil	34x38	2.0	BLACK	28	9	45	Rolls /Drawstring	6
3	CONT20EV PALLET	32x46	2.5	BLACK	20	32	256	Rolls	
4	CONT50EV	32x46	2.5	BLACK	50	10	100	Rolls	
5	ULR-42G-FL-10C	33x48	3.0	BLACK	10	7	35	Rolls/Flaps	12
6	COMMANDER20	33x48	3.0	BLACK	20	28	252	Individual Folded	
7	RU CONTRACTOR 50	33x48	3.0	BLACK	50	14	112	Individual Folded	
8	UL 4MIL CONTRACTOR	33x48	4.0	BLACK	32	14	56	Individual Folded	
9	CONT 334830C	33X48	3.0	CLEAR	20	10	100	Flatpack	

*Rating

WE SHIP ALL STOCK PRODUCT WITHIN 72 HOURS



800-394-BAGS (2247) | INFO@ALUFPLASTICS.COM

Clear 50/50

Clear bags are excellent for recycling and indispensable for identification or security purposes. Made from a blend of clear recycled and virgin resins. These are our heaviest and most popular clear bags.



FEATURES



GUSSET SEAL



GANG FOLDED

IDEAL FOR



JANITORIAL



INDUSTRIAL



MUNICIPAL



CONTRACTING

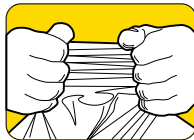


INSTITUTIONAL

ITEM CODE	SIZE	GALLON	GAUGE	PACK	CASE LAYER	PALLET
24231CL	15x9x23	7-10	1.0	500	10	70
24311CL	15x9x31	12-16	1.0	500	10	60
36012CL	16x14x36	20-30	1.2	100	10	100
36002CL	16x14x36	20-30	2.0	100	10	100
39012CL	20x13x39	33	1.2	100	10	100
39015CL	20x13x39	33	1.5	100	10	100
39002CL	20x13x39	33	2.0	100	10	90
174612CL	23x17x46	45	1.2	100	10	100
174615CL	23x17x46	45	1.5	100	10	100
17462CL	23x17x46	45	2.0	100	10	70
434615CL	23x20x46	56	1.5	100	10	70
145815CL	22x14x58	50-55	1.5	100	10	70
165812CL	22x16x58	55-60	1.2	100	10	90
165815CL	22x16x58	55-60	1.5	100	10	70
16582CL	22x16x58	55-60	2.0	100	10	60
96G15CL	32x29x68	95	1.5	32	10	100

HP Clear Liners

High Performance Clear, Low-Density, Super Hexene, gusset sealed bags, flat packs. This PREMIUM resin has superior strength and stretch than heavier gauge repro blend.



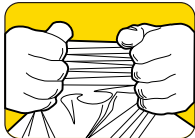
ITEM CODE	SIZE	GALLON	GAUGE RATING	PACK	CASE LAYER	PALLET
HP24311CL	15x9x31	12-16	1.0	500	10	70
HP36015CL	16x14x36	20-30	1.5	100	10	100
HP174612CL	23x17x46	45	1.2	100	10	100
HP174615CL	23x17x46	45	1.5	100	10	100
HP434615CL	23x20x46	56	1.5	100	10	100
HP165812CL	22x16x58	55-60	1.2	100	10	100
HP165815CL	22x16x58	55-60	1.5	100	10	100
HP16582CL	22x16x58	55-60	2.0	100	10	70

CSR CORELESS CLEAR SERIES

High Performance Super Hexene Star Seal Leak-proof Bags

CSR Series is manufactured from Prime Super Hexene resin that offers extra high performance strength and unsurpassed stretch. A cost benefit over heavier gauge repro bags.

- Puncture- and tear-resistant
- Super strength
- Easy-to-use rolls
- Source reduction
- Made from USDA and FDA approved materials
- High Performance
- LD Super Hexene
- Coreless Rolls Star Seal



FEATURES



STAR SEAL



PERFORATED ROLLS

IDEAL FOR



FOOD SERVICE



INDUSTRIAL



GROCERY



HEALTHCARE

HIGH DENSITY

COEX

LOW DENSITY
BLACK REPRO

LOW DENSITY
VIRGIN / BLEND

SPECIALTY ITEMS

PACKAGING

ITEM CODE	SIZE	GALLON	GAUGE RATING	PACK	INNER PACK Rolls/Per Roll	CASE LAYER	PALLET
CSR10	24x23	7-10	1.0	500	20/25	10	100
CSR16	22x31	12-16	1.0	500	20/25	10	100
CSR301	30x36	20-30	1.0	250	10/25	10	100
CSR302	30x36	20-30	1.5	100	5/20	10	100
CSR332	33x39	33	1.5	100	5/20	10	100
CSR334	33x39	33	2.0	100	5/20	10	100
CSR44T2	37x48	44	1.5	100	5/20	10	100
CSR452	40x46	45	1.5	100	5/20	10	100
CSR454	40x46	45	2.0	100	5/20	10	100
CSR562	43x46	56	1.5	100	5/20	10	100
CSR564	43x46	56	2.0	100	5/20	10	100
CSR602	38x58	55-60	1.5	100	5/20	10	100
CSR604	38x58	55-60	2.0	100	5/20	10	90

WE SHIP ALL STOCK PRODUCT WITHIN 72 HOURS



800-394-BAGS (2247) | INFO@ALUFPLASTICS.COM

BLUE RECYCLING

HP High Performance

Superior strength and stretch

The HP Series Bags are made from prime Super Hexene material and have superior strength. These bags are equivalent to our repro blend, yet more cost-efficient. Packed in a convenient white dispenser carton.

- Super Hexene
- Star Seal

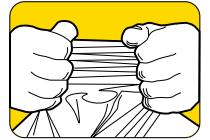
FEATURES



STAR SEAL



FLAT PACK



IDEAL FOR



JANITORIAL



INDUSTRIAL



MUNICIPAL



INSTITUTIONAL



CONTRACTING

ITEM CODE	SIZE	GALLON	GAUGE RATING	PACK	CASE LAYER	PALLET
HP-RBL31*	15x9x31	12-16	1.2	250	10	100
AM RECYCLING BLUE**	33x38	33	1.2	50	24	264
HP-RBL3346	33x46	40-45	1.2	100	10	100
HP-RBL46	40x46	45	1.2	100	10	110
HP-RBL55	38x55	55-60	1.2	100	10	100

*Gusset **Coreless rolls

Blue Recycling Bags

Blue Recycling Bags prove tough enough to withstand rough curbside pick-up. Made from a material blend of virgin and recycled resins, packed in a convenient white dispenser carton.

- Blend of virgin and recycled resin
- Star Seal



ITEM CODE	SIZE	GALLON	GAUGE	PACK	CASE LAYER	PALLET
H-RBL3346	33x46	40-45	1.2	100	10	100
H-RBL36	30x36	20-30	1.2	200	10	100
H-RBL39	33x39	33	1.2	100	10	100
H-RBL46	40x46	45	1.2	100	10	100
H-RBL55	38x55	55-60	1.2	100	10	70

W H I T E B A G S

Coreless Rolls

Ideal for use in offices, stores and medical facilities. Star seal assures leak-proof security. Bags are made from prime virgin material.

- Leak-proof security
- Coreless perforated rolls
- Star Seal



PERFORATED ROLLS

FEATURES



STAR SEAL

IDEAL FOR



JANITORIAL



INDUSTRIAL



MUNICIPAL



HEALTH CARE



INSTITUTIONAL



FOOD SERVICE



CONTRACTING



HOSPITALITY

ITEM CODE	SIZE	GALLON	GAUGE	PACK	INNER PACK Rolls/Per Roll	CASE LAYER	PALLET
CR2431W	24x31	12-16	0.5	500	10/50	10	100
CR3036W	30x36	20-30	0.7	200	8/25	10	90
CR3339W	33x39	33	0.7	150	6/25	10	80
CR4046W	40x46	45	0.7	100	4/25	10	100
CR3858W	38x58	55-60	0.7	100	4/25	10	100

Flat Pack

Bright and clean-looking, these leak-proof white bags are ideally suited for offices, department stores and medical facilities. Star seal assures leak-proof security. Bags are made from prime virgin material.

- Leak-proof security
- Flat Pack



FLAT PACK

ITEM CODE	SIZE	GALLON	GAUGE	PACK	CASE LAYER	PALLET
W31*	15x9x31	12-16	0.5	500	10	100
W36	30x36	20-30	0.7	200	10	100
W39	33x39	33	0.7	150	10	120
W58	38x58	55-60	0.7	100	10	100

*Gusset seal

HIGH DENSITY

COEX

LOW DENSITY
BLACK REPRO

LOW DENSITY
VIRGIN / BLEND

SPECIALTY ITEMS

PACKAGING

FEATURES



STAR SEAL



FLAT PACK

IDEAL FOR



JANITORIAL



INDUSTRIAL



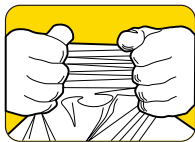
MUNICIPAL



INSTITUTIONAL



CONTRACTING



C O M M A N D E R

Super Hexene

Manufactured from a premium grade Super Hexene resin, these flat pack bags are star sealed for leak-proof protection.

These remarkably rugged Low Density bags are puncture- and tear-resistant with unsurpassed stretch. These bags can comfortably withstand both sharp and heavy objects without causing zippering or straight line tears. Their characteristics make them ideal for all uses.

- Leak-proof
- Star Seal
- Super Hexene material
- Superior stretch
- Easy-to-use dispenser carton
- Source reduction
- Puncture-resistant



ITEM CODE	SIZE	GALLON	COLOR	STRENGTH	PACK	CASE LAYER	PALLET
24-5BK*	15x9x23	7-10	Black	L	500	10	100
24-5CL*	15x9x23	7-10	Clear	L	500	10	100
33-5BK*	15x9x31	12-16	Black	L	500	10	100
33-5BR*	15x9x31	12-16	Brown	L	500	10	100
33-5CL*	15x9x31	12-16	Clear	L	500	10	100
33HBK**	15x9x31	12-16	Black	H	500	10	70
37HBK	30x36	20-30	Black	H	250	10	100
37HCL	30x36	20-30	Clear	H	250	10	100
37MCL	30x36	20-30	Clear	M	250	10	100
40HBK	33x39	33	Black	H	250	10	100
40HCL	33x39	33	Clear	H	250	10	100
40MCL	33x39	33	Clear	M	250	10	100

*Butene material, gusset seal **Gusset seal



SPECIALTY BAGS

Draw Tape

Draw Tape bags are manufactured using prime super strength high performance Octene LLDPE material. These bags are stronger than heavier gauge recycled bags.

- **Super strength**
- **Source reduction**
- **Puncture- and tear-resistant**
- **Easy-to-use interleaved coreless rolls**



FEATURES



FLAT SEAL



INTERLEAVED ROLL

ITEM CODE	SIZE	GALLON	GAUGE	COLOR	MATERIAL	PACK	INNER PACK Rolls/Per Roll	CASE LAYER	PALLET	PACK TYPE
DS13W 24x27	24x27	13	0.9	White	Super hexene	200	4/50	10	100	Brown Box
ULR-13G-DS-120C.78	24x27	13	0.78	White	Super hexene	60	12/60	8	40	6 Retail boxes/ Master
ULR-13G-DS-48C	24x27	13	0.9	White	Super hexene	48	12/48	8	40	12 Retail boxes/ Master
DSX-23C	28.5x39	26	0.9	Clear	Coex	200	8/25	10	100	Brown Box
DS33K	33x38	33	1.0	Black	Super hexene	150	6/25	10	100	Brown Box
UL 33 GAL.-DS	33.5x38	33	1.4	Black	Low Density	86	2/43	17	51	Retail Box
COMMANDER 42-28 2Mil	34x38	42	1.5	Black	Low Density	28	6/28	9	45	6 Retail boxes/ Master
DSX-55K	40.5x45.5	45-55	1.25	Black	Coex	100	5/20	10	70	Brown Box

Mattress Bags

Mattress Bags keep your mattress and box springs clean during moving or storing while protecting against soil, dust and water damage.

- **Heavy gauge clear bag**
- **Made of virgin and recycled resins**



FEATURES



STAR SEAL



3" CORE ROLLS

IDEAL FOR



JANITORIAL



INDUSTRIAL



HOSPITALITY



HEALTH CARE

HIGH PERFORMANCE MATTRESS BAGS/3" CORES

ITEM CODE	SIZE	GAUGE RATING	PACK	CASE LAYER	PALLET	PACK	SEAL
HP MAT TWIN	38x12x90	2.0	50	5	20	3" Core	Gusset
UL-MAT FULL-100C**	54x11x90	2.5	100	4	16	3" Core	Gusset
HP MAT FULL	54x12x90	2.5	30	7	28	3" Core	Gusset
HP MAT QUEEN	60x12x94	2.5	30	7	28	3" Core	Gusset
HP MAT KING	78x12x95	3.0	25	7	28	3" Core	Gusset
RETAIL SINGLE-PACKED 12 POUCHES PER MASTER							
UL-MAT-QN-12C*	60x10x92	2.0	12	10	100	1 per pouch	Gusset
UL-MAT-KG-12C*	78x10x96	2.0	12	10	100	1 per pouch	Gusset

*Retail packs made of Clear Repro

**Commercial pack, Repro

WE SHIP ALL STOCK PRODUCT WITHIN 72 HOURS



800-394-BAGS (2247) | INFO@ALUFPLASTICS.COM

25

HIGH DENSITY

COEX

LOW DENSITY
BLACK REPRO

LOW DENSITY
VIRGIN / BLEND

SPECIALTY ITEMS

PACKAGING

SPECIALTY BAGS

Printed Red Infectious Waste Bags

These Red Printed Infectious Waste Bags sufficiently fulfill the federal DOT strength requirements for the disposal of medical waste and are packed in a white dispenser carton.

ITEM CODE	SIZE	GALLON	STRENGTH	PACK	CASE LAYER	PALLET
IWP48	40x47	45	XXH	100	10	100



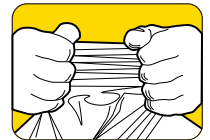
FEATURES



STAR SEAL



FLAT PACK



Basic Infectious Warning Print



Standard Biohazard Infectious Waste Logo can be applied to any bag.

Aluf Plastics
offers
two different
print options for
custom Infectious
Waste Bags

DOT Infectious Waste Print



DOT Biohazard Infectious Waste is only applied to bags that are made with a minimum of 3 mil LDPE or 1.2 Mil Super Hexene material.

SPECIALTY BAGS

Compostable Bags

Help the environment with Aluf's 100% compostable and biodegradable liners. These liners meet ASTM #D6400 standard specification biodegradable and compostable plastics.

- Meets ASTM #DS6400 Standard specifications
- Designed to be composted in a commercial/industrial facility and are NOT suitable for backyard composting



STAR SEAL BAGS, NATURAL, PRINTED

ITEM CODE	SIZE	GALLON	GAUGE	PACK	INNER PACK Rolls/Per Roll	CASE LAYER	PALLET
EC2433E85	24x33	12-16	.85	100	4/25	10	100
EC3036E85	30x36	20-30	.85	70	2/35	10	100
EC3348E85	33x48	42	.85	50	2/25	10	100
EC3858E85	38x58	55-60	.85	35	1/35	10	100
EC4248E85	42x48	56	.85	40	2/20	10	100



FEATURES

- STAR SEAL
- CORELESS ROLLS

IDEAL FOR

- JANITORIAL
- FOOD SERVICE
- MUNICIPAL
- GROCERY
- HOSPITALITY

HIGH DENSITY

COEX

LOW DENSITY
BLACK REPRO

LOW DENSITY
VIRGIN / BLEND

SPECIALTY ITEMS

PACKAGING

WE SHIP ALL STOCK PRODUCT WITHIN 72 HOURS



800-394-BAGS (2247) | INFO@ALUFPLASTICS.COM

SPECIALTY BAGS

FEATURES



GUSSET SEAL



GANG FOLDED

IDEAL FOR



JANITORIAL



INDUSTRIAL



GROCERY



HEALTH CARE



HOSPITALITY



HOSPITALITY

Poly/Food Bags

Our selection of FDA approved food bags are manufactured from virgin, high-clarity resin and are conveniently packaged in white dispenser cartons.

FOOD BAGS

Perfect for packaging a variety of foods, including bakery items, cheese, meat and frozen food products.

ICE BUCKET BAGS

Manufactured from high-impact virgin resin and designed to withstand extreme cold temperatures.

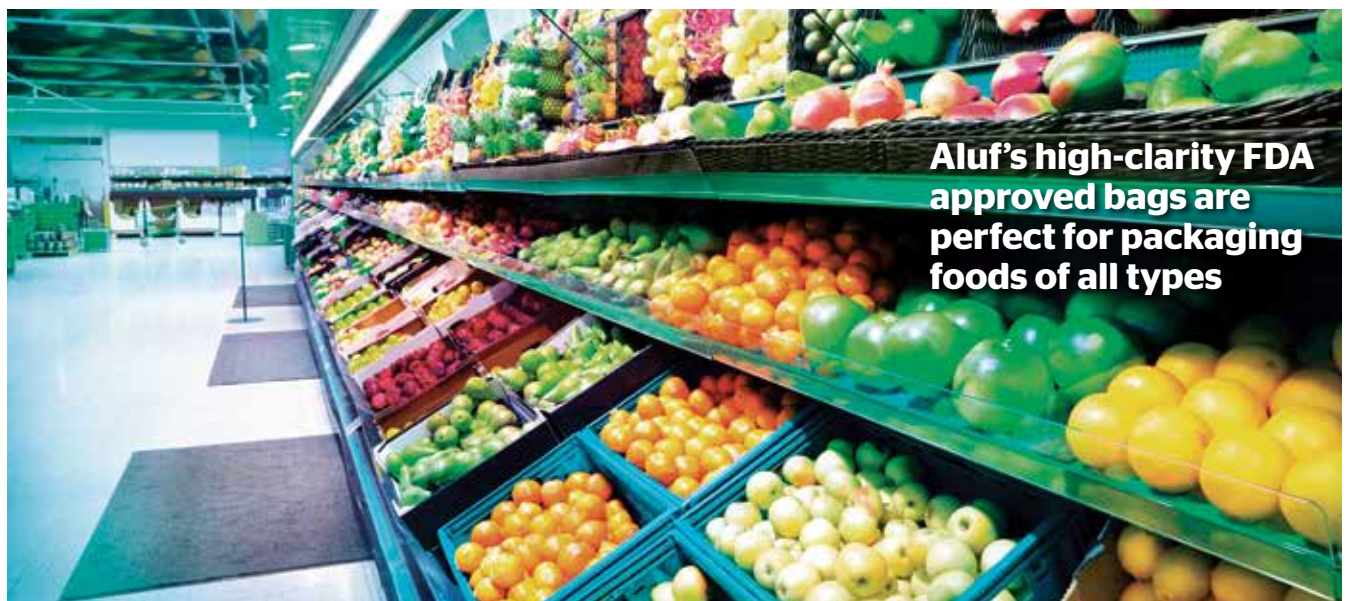
UTILITY ROLLS

Extremely versatile bags. They are ideal for a variety of applications, including bakery, produce and small parts inventory; packed in a white box on a 1.5" core.



ITEM CODE	SIZE	DESCRIPTION	STRENGTH	PACK	CASE LAYER	PALLET
FB428	4x2x8	Pint	L	1000	25	375
FB4212	4x2x12	Quart	L	1000	24	264
FB6312	6x3x12	Food Bag	L	1000	16	224
FB6315R	6x3x15	3 Quart	L	1000	16	224
FB8315	8x3x15	5 lb Ice Bucket Liner	L	1000	10	140
FB8418R	8x4x18	Med Poultry	L	1000	10	140
FB8418	8x4x18	Hvy Poultry	H	1000	10	100
FB8418H	8x4x18	X Hvy Poultry	XH	1000	10	50
FB10842	10x8x24	X Large Polybag	XH	500	10	100
FB10845	10x8x24	X Large Polybag	H	500	10	100
FB12802	12x8x30	XX Large Poultry	XH	500	10	70
A35*	21x6x35	Bun Pan Cover	M	200	12	96

*On a 1.5" cored roll



Industrial Poly Products Include:

Pallet Covers and Gaylord Liners

Available in custom sizes and standard colors.
Virgin and Repro Low Density material.

Box Liners

Available for industrial, food processing and retail applications in Low Density Polyethylenes, manufactured in Butene, Super Hexene, LLDPE or Repro.

Industrial Bags and Sheeting

Available flat pack as well as on a roll.

Custom Capabilities

- Bags:** Flat Pack
Cored Rolls
Coreless Rolls

- Sheeting:** Center Slit
Center Fold
Center Slit Gusseted
Double Wound Sheeting

- Tubing:** Continuous Tubing from 10" to 99" wide
Gusseted Tubing to a maximum of 178" wide
Perforated Tubing/Sleeves
Bags on a Roll
Roll diameters up to 11" depending on size

- Materials:** LLDPE, Hexene, Super Hexene. Butene, Butene High Clarity, Coex Super Tuff CXP, Metallocene/AKA Alulene Blend
- All prime resins are FDA approved. Repro, antimicrobial, additives, ultraviolet blockers, tints and colors, non-slip, medium slip, high slip, fractional melt, anti-static and compostable materials are available.

Gauges:	Min. Gauge	Max. Gauge	Min. Width	Max. Width
Prime:	.0004	6 Mil	8" (29" Tube)	99" (178" gusseted)
Repro:	.0008	6 Mil	8" (29" Tube)	99" (178" gusseted)



HIGH DENSITY

COEX

LOW DENSITY
BLACK REPRO

LOW DENSITY
VIRGIN / BLEND

SPECIALTY ITEMS

PACKAGING

T A B L E C O V E R S

White Table Covers

Aluf Plastic table cover rolls are great for parties, banquets, trade shows, schools, community centers, camps, houses of worship, luncheons and large events. White, disposable table coverings coordinate with most tableware or drinkware designs and decorations.

- **White table cover rolls**
- **Length: perforated every 103" or uncut**
- **Width: 36" or 40"**
- **36" will cover 400 standard 8 ft. tables**
- **40" can be cut to fit different size tables**



ITEM CODE	DESCRIPTION	SIZE	GAUGE	PACK	PALLET
TABLE Cover 36x103	White Table Covers on Roll	36"X103"	0.8 Mil	400 Table covers on 3" Core Roll	50

Custom sizes available, minimum 2 skids

SLIM-FIT GUIDE



SLIM-Fit™

44 Gallon Example

Typical Fit

Poly Sheeting

Gritty construction dust is the bane of any remodeling project or large home repair job, whether you're hiring a contractor or doing the work yourself. Dust can damage furniture and rugs and ruin the finish on a hardwood floor.

Dust can inevitably find its way far beyond the work area, traveling on to shoes and clothing with the slightest breeze – and even through duct work.

Although the dirtiest work takes place during demolition, drywall sanding and every phase of construction produces dust. Prepare for the onslaught before the job starts and maintain a dust containment system to the very last days of the project with poly sheeting.



ITEM CODE	SIZE	GAUGE	CASE LAYER	PALLET
PS09400.31	9ft x 400ft sheeting	7.8 Mic	19	152
PS101004	10ft x 100ft sheeting	4 Mil	6	36
PS101006	10ft x 100ft sheeting	6 Mil	6	36
PS10253*	10ft x 25ft Sheeting	3 Mil	6	24
PS121006	12ft x 100ft sheeting	6 Mil	6	36
PS201004	20ft x 100ft sheeting	4 Mil	5	25
PS201006	20ft x 100ft sheeting	6 Mil	5	25
PS201006 FR**	20ft x 100ft sheeting	6 Mil	5	25

*12 per master
 **Fire retardant
 Custom sizes available. Minimum 2 SKIDs.

Aluf Plastic operates a fleet of modern trucks to ensure a quick response and swift delivery

Covers: Pallet Dry Wall Lumber Yard



Y Seal



Pallet Cover

ITEM CODE	SIZE	MATERIAL	GAUGE	PACK	COLOR	PACK TYPE
Pallet Covers*	52x43x63	Low Density	2 mil	50	Natural	3" Core Roll
Dry Wall/Lumber Y-Seal Cover*	93x224	Low Density	3 mil	15	Natural	3" Core Roll

*Custom order, minimums apply. Available with UV protection and custom printing.

HIGH DENSITY

COEX

LOW DENSITY
 BLACK REPRO

LOW DENSITY
 VIRGIN / BLEND

SPECIALTY ITEMS

PACKAGING

LOW DENSITY ITEMS BY GALLON SIZE

CROSS REFERENCE



CXP



PG6/NY



RL



CSR



50/50



VCX



RCM



RCT



HP

Gallon Size	CXP	VCX	PG6/NY	RCM	RL	RCT	CSR	50/50	HP	Gauge Rating
7-10					RL-2423H		CSR10	24231CL		1.0
7-10			PG6-2420							1.2
12-16					RL-2432H		CSR16	24311CL	HP24311CL	1.0
12-16	CXP-2433X		PG6-3320							1.2
20-30		VCX-3036	PG6-3720	RCM-3036	RL-3036XH	RCT-30	CSR301	36012CL		1.2
20-30			PG6-3740				CSR302			1.4
20-30	CXP-3036X	VCX-3036X	PG6-3751	RCM-3036X		RCT-30X				1.5
20-30	CXP-3036XXX	VCX-3036XXX	NY37XX					36002CL		2.0
26	CXP-2945			RCM-2944						1.2
32	CXP-3347X			RCM-3347X	RL-3347XH	RCT-32X				1.5
32		VCX-3347XXX								2.0
33					RL-3339H					1.0
33		VCX-3339		RCM-3339	RL-3339XH	RCT-33	CSR332	39012CL		1.2
33			PG6-4040							1.4
33	CXP-3339X	VCX-3339X	PG6-4051		RL-3339XXH	RCT-33X	CSR334	39015CL	HP39015CL	1.5
33	CXP-3339XX	VCX-3339XX	NY40X							1.7
33	CXP-3339XXX	VCX-3339XXX	PG6-4060			RCT-33XXX		39002CL		2.0
33			NY40XXX							2.3
44				RCM-3853	RL-3646XH					1.2
44				RCM-3853X			CSR44T2			1.5
44				RCM-3853XXX						2.0
45					RL-4047H					1.0
45		VCX-4047		RCM-4047	RL-4047XH		CSR452	174612CL	HP174612CL	1.2
45			PG6-4640							1.4
45	CXP-4047X	VCX-4047X	PG6-4651	RCM-4047X	RL-4047XXH	RCT-45X	CSR454	174615CL	HP174615CL	1.5
45			PG6-4650							1.6
45	CXP-4047XX	VCX-4047XX	NY48X	RCM-4047XX		RCT-45XX				1.7
45	CXP-4047XXX	VCX-4047XXX	PG6-4660	RCM-4047XXX	RL-404720	RCT-45XXX		17462CL		2.0
45			NY48XXX							2.3
56					RL-4347H					1.0
56		VCX-4347			RL-4347XH		CSR562			1.2
56	CXP-4347X	VCX-4347X	PG6-4751	RCM-4347X	RL-4347XXH		CSR564	434615CL	HP434615CL	1.5
56			PG6-4750							1.6
56	CXP-4347XX					RCT-56XX				1.7
56	CXP-4347XXX	VCX-4347XXX		RCM-4347XXX	RL-434720					2.0

LOW DENSITY ITEMS BY GALLON SIZE (CONTINUED)

CROSS REFERENCE

Gallon Size	CXP	VCX	PG6/NY	RCM	RL	RCT	CSR	50/50	HP	Gauge Rating
50-55		VCX-3658X	PG6-5851					145815CL		1.5
50-55			NY58X							1.7
50-55			PG6-5860							2.0
50-55			NY58XXX							2.3
55-60					RL-3858H					1.0
55-60		VCX-3858		RCM-3858	RL-3858XH	RCT-60	CSR602	165812CL	HP165812CL	1.2
55-60	CXP-3858X	VCX-3858X	PG6-6051	RCM-3858X	RL-3858XXH	RCT-60X	CSR604	165815CL	HP165815CL	1.5
55-60			PG6-6050							1.6
55-60	CXP-3858XX	VCX-3858XX		RCM-3858XX		RCT-60XX				1.7
55-60			NY60PLUS							1.8
55-60	CXP-3858XXX	VCX-3858XXX	PG6-6060	RCM-3858XXX	RL-385820	RCT-60XXX		16582CL	HP16582CL	2.0
55-60			NY603X							2.7
65			PG6-6551							1.5
65			PG6-6550							1.6
95								96G15CL		1.5
95			PG6-9660							2.0

HIGH DENSITY ITEMS BY GALLON SIZE



HCR



SCR



PCM



HCR	SCR	PCM	Gallon Size
HCR-242406C*	SCR-242406C*		7-10
HCR-242408C*			7-10
HCR-243306C*	SCR-243306C		12-16
HCR-243308C*	SCR-243308C	PCM-243308C	12-16
HCR-242708C			13
HCR-303708C			20-30
HCR-303710C	SCR-303710C*	PCM-303710C	20-30
HCR-303713C	SCR-303713C	PCM-303713C	20-30
HCR-303716C*			20-30
HCR-334011C			33
HCR-334013C	SCR-303713C		33
HCR-334016C*	SCR-334016C	PCM-334016C	33
HCR-334022B	SCR-334022C		33
HCR-404812C			45
HCR-404814C		PCM-404814C	45
HCR-404816C*	SCR-404816C*	PCM-404816C	45
HCR-404822C*	SCR-404822C*	PCM-404822C	45
HCR-434816C		PCM-434816C	56
HCR-434822C*		PCM-434822C	56
HCR-366017C			50-55
HCR-386014C			55-60
HCR-386017C*	SCR-386017C	PCM-386017C	55-60
HCR-386022C*	SCR-386022C	PCM-386022C*	55-60

*Also available in black

WE SHIP ALL STOCK PRODUCT WITHIN 72 HOURS



800-394-BAGS (2247) | INFO@ALUFPLASTICS.COM

Still don't see what you are looking for?
Custom orders are just 3 weeks away!
Low Minimums & Private Labels

RETAIL PACKED ITEMS BY GALLON SIZE CROSS REFERENCE



UL-ASB-6 MIL-32



UL 55 GAL-50



SCL-100



ULR-30G-DS-30C



ULR-TK13G-DS-17C



VL 13070W18



UL-MAT-KG-12C

PPG BLUE



Gallon Size	Item ID	Description	Closure	Color Name	Scent	Count Each	Per Master	Brand Name	Packaging Type	Gauge
13	VL 13070W18	Tall Kitchen	Hand Tie	White		18	24	Ultrasac	Printed Poly Bag	0.7
13	ULR-13G-DS-120C.78	Tall Kitchen	Draw String	White		120	6	Commander	Printed Box	0.8
13	ULR-13G-DS-200C.78	Tall Kitchen	Draw String	White		200	1	Commander	Printed Box	0.8
13	ULR-13G-FL-80C	Tall Kitchen	Flap Tie	White		80	12	Commander	Printed Box	0.8
13	ULR-13G-FL-68C	Tall Kitchen	Flap Tie	White		68	12	Commander	Printed Box	0.8
13	ULR-13G-DS-44C	Tall Kitchen	Draw String	White		44	12	Commander	Printed Box	0.9
13	ULR-13G-DS-48C	Tall Kitchen	Draw String	White		48	12	Commander	Printed Box	0.9
13	ULR-13G-DS-48C LM	Tall Kitchen	Draw String	White	Lemon	48	12	Commander	Printed Box	0.9
13	ULR-TK13G-DS-17C	Tall Kitchen	Draw String	White	Lemon	17	12	Ultrasac	Printed Box	0.9
Compactor	UL COMPACTOR BAGS	Compactor	Twist Tie	White		40	1	Ultrasac	Printed Box	2.5
20-30	ULR-30G-DS-28C	Large Trash	Draw String	Black		28	12	Commander	Printed Box	1.0
20-30	ULR-30G-DS-30C	Large Trash	Draw String	Black		30	12	Commander	Printed Box	1.0
20-30	ULR-30G-FL-40C	Large Trash	Flap Tie	Black		40	12	Commander	Printed Box	1.0
20-30	ULR-LT30G-DS-12C	Large Trash	Draw String	Black		12	12	Ultrasac	Printed Box	1.0
20-30	ULR-30G-DS-16C	Large Trash	Draw String	Black		16	12	Commander	Printed Box	1.0
33	UL 33 GAL BLUE RECYCLING	Large Trash	Hand Tie	Blue tint		50	1	Ultrasac	Brown Box	0.9
33	ULR-39G-FL-40C	Large Trash	Flap Tie	Black		40	6	Commander	Printed Box	1.2
33	UL 33 GAL	Large Trash	Twist Tie	Black		100	1	Ultrasac	Printed Box	1.4
33	UL SHORT CONTRACTOR 50 4FLAP	Large Trash	Flap Tie	Black		50	1	Ultrasac	Printed Box	3.0
33	UL-ASB-4 MIL-50	Large Trash	Hand Tie	Black		50	1	Ultrasac	Brown Box	4.0
33	UL-ASB-6 MIL-32	Large Trash	Hand Tie	Black		32	1	Ultrasac	Brown Box	6.0
39	ULR-39G-FL-24C	Lawn & Leaf	Flap Tie	Black		24	12	Commander	Printed Box	1.1
39	UL LAWN & LEAF	Lawn & Leaf	Twist Tie	Black		100	1	Ultrasac	Printed Box	1.5
42	UL 33 GAL. BLUE RECYCLING-DS	Contractor	Draw String	Blue tint		45	1	Ultrasac	Printed Box	0.9
42	UL 33 GAL.-DS	Contractor	Draw String	Black		86	1	Ultrasac	Printed Box	1.4
42	3MCON20	Contractor	Flap Tie	Black		20	1	Ultrasac	Printed Box	2.0
42	COMMANDER 42-28 2Mii	Contractor	Draw String	Black		28	6	Commander	Printed Box	2.0
42	CONT20EV PALLET	Contractor	Hand Tie	Black		20	1	Ultrasac	White Box	2.5
42	CONT50EV	Contractor	Hand Tie	Black		50	1	Ultrasac	White Box	2.5
42	COMMANDER 42-20 3Mii	Contractor	Flap Tie	Black		20	1	Commander	Printed Box	3.0
42	COMMANDER20	Contractor	Hand Tie	Black		20	1	Commander	Printed Box	3.0
42	CONT 334830C	Contractor	Hand Tie	Clear		20	1	Ultrasac	Brown Box	3.0
42	RU CONTRACTOR 50	Contractor	Hand Tie	Black		50	1	Ultrasac	Printed Box	3.0
42	UL CONTRACTOR 20 4FLAP	Contractor	Flap Tie	Black		20	1	Ultrasac	Printed Box	3.0
42	UL CONTRACTOR 50 4FLAP	Contractor	Flap Tie	Black		50	1	Ultrasac	Printed Box	3.0
42	ULR-42G-FL-10C	Contractor	Flap Tie	Black		10	12	Commander	Printed Box	3.0
42	COMMANDER 42-32 4Mii	Contractor	Flap Tie	Black		32	1	Commander	Printed Box	4.0
45	UL RECYCLING CLEAR	Extra Large	Twist Tie	Clear		100	1	Ultrasac	Printed Box	1.1
45	UL EXTRA LARGE 1.8	Extra Large	Twist Tie	Black		50	1	Ultrasac	Printed Box	1.8
55-60	UL 55 GAL-50	Drum Liner	Twist Tie	Black		50	1	Ultrasac	Printed Box	2.0
55-60	UL 3MDRUM	Drum Liner	Hand Tie	Black		40	1	Ultrasac	Brown Box	3.0
Mattress Twin	HP MAT TWIN	Mattress Twin	Hand Tie	Clear		50	1	Ultrasac	Brown Box	2.0
Mattress Full	UL-MAT FULL-100C	Mattress Full	Hand Tie	Clear		100	1	Ultrasac	Brown Box	2.5
Mattress Queen	UL-MAT-QN-12C	Mattress Queen	Hand Tie	Clear		1	12	Ultrasac	Printed Poly Bag	2.0
Mattress King	UL-MAT-KG-12C	Mattress King	Hand Tie	Clear		1	12	Ultrasac	Printed Poly Bag	2.0
Misc	PPA-W	Smock		White		100	1		Brown Box	1.0
Misc	SCL-100	Shopping Cart Liner		Clear		100	1		Brown Box	1.0
Misc	SCL-5R	Shopping Cart Liner		Clear		5	20		Poly Bag	1.0
Misc	PPG BLUE	PPG Gown		Blue		50	1		Brown Box	1.5

Bag Choosing Guide



How to choose the correct can liner in 3 easy steps.

STEP 1 – MATERIALS: Are there sharp objects being thrown away?

YES – Select one of the following options:

NO – Select one of the following options:

SHARP OBJECTS	Low Density High Mil	Low Density Med Mil	Low Density Low Mil	LD Super Hexene Med Mil	LD Super Hexene High Mil
Construction Debris	3 mil				
Broken Glass		2 mil		1 mil	
Items with Sharp Corners			1.5 mil		.8 mil
Lawn Trimmings & Sticks			1.5 mil	.9 mil	
Bones, Crab Legs, Sharp Metal Lids				.9 mil	.8 mil

GENERAL WASTE	LD Super Hexene Low Mil	High Density High Mic	Low Density Low Mil	High-D Low/Med Mic	High Density Low Mic
General Food Waste	.7 mil	17 mic	14 mic		
Newspapers & Magazines		14 mic		1 mil	
Rags/Linens		12 mic	10 mic		.8 mil
Office Waste	.4 mil		1.5 mil	8 mic	
Tissues					6 mic

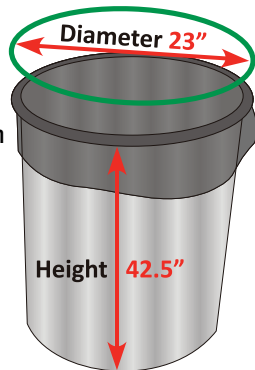
STEP 2 – SIZE: How to determine the proper liner size? Follow these steps:

Round: Example:

Diameter: 23" Height: 42.5"
 Width = diameter x 1.57
 23" x 1.57 = 36.11" = 36"

Length = 1/2 diameter + 4" + height of can
 Length of bag = 58"
 11.5" (1/2 dia.) + 4" + 42.5" = 58"

Bag Size should be:
36" x 58"

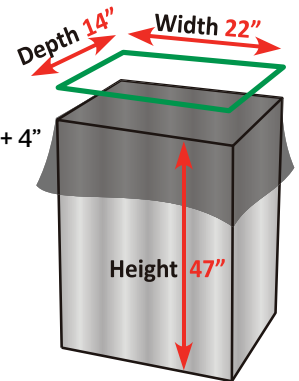


Square/Rectangle: Example:

Width: 22" Depth: 14" Height: 47"
 Width = add the width + the depth
 Width of bag = 36"
 22" + 14" = 36"

Length = 1/2 of the depth + height of can + 4"
 Length of bag = 58"
 7" + 47" + 4" = 58"

Bag Size should be:
36" x 58"



STEP 3 – GAUGE: How to determine bag thickness?

HI-DENSITY	
Gauge	Max Load
6	16
8	20
10	30
13	55
14	55
16	70
17	75
19	80
22	85

REPRO & POST	
Gauge	Max Load
0.8	32
1.0	40
1.2	48
1.3	52
1.5	60
1.6	64
1.7	68
1.9	76
2.0	80

ALULENE	
Gauge	Max Load
0.8	36
1.0	45
1.2	54
1.3	59
1.5	68
1.6	72
1.7	77
1.9	86
2.0	90

BUTENE	
Gauge	Max Load
0.4	22
0.6	33
0.7	39
0.8	44
0.9	50
1.0	55
1.3	72
1.5	83
2.0	110

HEXENE	
Gauge	Max Load
0.4	28
0.6	42
0.7	49
0.8	56
0.9	63
1.0	70
1.3	91
1.5	105
2.0	140

SUPER HEXENE	
Gauge	Max Load
0.4	30
0.6	45
0.7	53
0.8	60
0.9	68
1.0	75
1.3	98
1.5	113
2.0	150



Converting Gauge

Can Liner Mil and Micron Conversion Formulas

How to Convert Mils to Microns

Multiply the Mil by 25.4

$$\text{_____ Mil} \times 25.4 = \text{_____ Microns}$$

The resulting number is the actual Micron thickness.

How to Convert Microns to Mils

Divide the Micron by 25.4

$$\text{_____ Microns} \div 25.4 = \text{_____ Mil}$$

The resulting number is the actual Mil thickness.

This table highlights the most popular can liners in both gauge and microns

MIL THICKNESS	MICRON EQUIVALENT
0.20	5
0.24	6
0.28	7
0.31	8
0.35	9
0.39	10
0.43	11
0.47	12
0.51	13
0.55	14
0.59	15
0.63	16
0.67	17
0.71	18
0.75	19
0.79	20
0.83	21
0.87	22
0.91	23
0.94	24
0.98	25
1.00	25.4



Calculating Gauge

Calculating Bag Thickness

1. Weigh 4 bags in pounds on a scale to get an AVERAGE weight.

If scale provides weight in OUNCES divide by 16; or if by GRAMS, multiply x .0022 to get pounds.

2. For width and length below use ACTUAL exact length you physically measured, not what is on the label.

For Low Density

Weight in lbs. ÷ Total Width ÷ Length ÷ # of bags weighed x 15 = Gauge

For example see below

Try it _____ lbs. ÷ _____ Width ÷ _____ Length ÷ _____ # of bags weighed x 15 = _____ Mil

i. Example: 29.4 Net Weight 38x58, 2 mil, LLDPE 100 count =

ii. 29.4 lbs. ÷ 38 width ÷ 58 length ÷ LLDPE 100 count x 15 =

.002 mil

For High Density

Weight in lbs. ÷ Total Width ÷ Length ÷ # of bags weighed x 15 = Gauge

For examples see below

Try it _____ lbs. ÷ _____ Width ÷ _____ Length ÷ _____ # of bags weighed ÷ 0.0686 x 25,400 = _____ Micron

i. Example: 20.75 Net Weight 40x48, 16 Micron HDPE 250 count =

ii. 20.75 lbs. ÷ 40 width ÷ 48 length ÷ 250 count ÷ 0.0686 x 25,400 =

16 mic



Calculating Net Weight

For Low Density

Gauge ÷ 15 x Total Width x Length x Pack = Net lbs. per case

For example see below

Try it _____ Gauge ÷ 15 x _____ Width x _____ Length x _____ Pack = _____ Net Weight per Case

i. For LD gauge, please input 1.5 mil as .0015 or .5mil as .0005

ii. Example: 40 x 46, 100 Case, 2 Mil =

iii. .002 ÷ 15 x 40 Total Width x 46 Length x 100 Case =

24.53 Net lbs. per case

For High Density

Gauge ÷ 25,400 x Total Width x Length x Pack x 0.0686 = Net lbs. per case

For example see below

Try it _____ Gauge ÷ 25,400 x _____ Width x _____ Length x _____ Pack x 0.0686 = _____ Net Weight per Case

i. For HD gauge, please input 17 Mic as the value of 17 ÷ 25,400 = .0006692

ii. Example: 33 x 40, 250 Case, 17 Mic =

iii. 17Mic ÷ 25,400 = .00066 x 33 Total Width x 40 Length x 250 Case x .0686 =

15.15 Net lbs. per case



Frequently Asked Questions



How can I order product samples?

Call your local representative, or contact Customer Service at 800-394-BAGS or info@alufplastics.com to request product samples.

What Freight Terms do you offer?

Prepaid, unless otherwise noted.

How can I tell the difference between Low Density and High Density bags?

Low Density bags feel and sound softer, and are usually thicker. High Density bags are thinner and make a crinkly sound.

Can I buy direct?

Being a manufacturer, our products are sold by our wholesale distributor partners. We can refer you to an Aluf Plastic's Manufacturer Rep or local distributor in your area depending upon your volume needs.

Can I mix products to meet the 250 case minimum for prepaid freight?

Yes, you can mix assorted items, full case layers are preferred, to have the entire order meet our 250 case requirement.

What is the difference between Mic and Mil?

Mic and Mil are units of measure that describe the thickness of plastic. High Density is measured in microns or the metric system. Low Density is measured in mils or the imperial system.

What are the minimum order requirements?

The minimum production run for custom items is usually 2,000 lbs.

Are all items listed in Aluf's Product Catalog in stock?

Yes, all listed items are in stock and available for immediate shipment unless otherwise noted. However, to keep inventory current, periodically new items are added and obsolete items removed from stock.

We also produce industrial products on a customer-by-customer basis with low minimums and prompt turnaround.

What are the lead times for stock and custom product?

Orders for stock product will ship in 72 hours, stock with Co-label in 5 business days. Custom product lead time for first order is four weeks and three weeks for subsequent orders. Exceptions apply; lead time will be confirmed at time of order.

Interesting Aluf Plastics Facts

- Aluf's various can liners have been used inside the White House and aboard Air Force One.
- Aluf manufactures premium can liners of all sizes ranging from 6 inches to 157 inches wide.
- Aluf Plastics stocks over 50 different 55 gallon liners for immediate shipment.
- Aluf's bags are subject to meticulous testing to ensure product meets or exceeds industry standards.
- Aluf Plastics has 90+ state-of-the-art extruders, running 24 hours a day.
- Aluf Plastics is the second largest blown film plant in the United States.
- Aluf has the only 3-ply can liner that qualified for LEED certification with COEX antimicrobial odor control.
- Aluf Plastics won the P.L.M.A. salute to excellence award for outstanding packaging innovation.
- Aluf Plastics is recognized by INC/5000 as one of the fastest growing companies in the USA.
- Aluf Plastics is proud to manufacture and sell products that are made in the USA.
- Aluf produces Blue, Green, Yellow, Buff, Gray, Red Silver, Orange, White, Purple, Brown, in addition to Black and Clear.



Aluf Plastics Terms and Conditions



Returns

The Aluf Plastics tagline is “our reputation in every bag” — as we are very committed to ensuring customer satisfaction and providing quality product. In the event there is a need to return product to Aluf Plastics, a **Return Merchandise Authorization (RMA)** must be obtained by contacting returns@alufplastics.com within 7 days of delivery. The Request for Return Merchandise Authorization email should include the **Original Invoice Number, Date, Quantity, and Reason for Return**.

If a returned item is found to be defective or delivered damaged, returns with an RMA will be accepted at no outgoing freight charge and full credit will be applied to the customer’s next invoice.

No credit will be given for custom/private label product, partially used packages or dead stock, unless defective.

All products accepted for return must be in unopened boxes, in resalable condition and are subject to a 15% restocking fee with no credit given for outgoing freight costs. After returned product is received in our warehouse, the amount paid for the product, less restocking fees (if applicable) will be credited on the customer’s next invoice. Claims for shortages must be noted on bill of lading at time of delivery.

Product Warranty

User assumes all risks resulting from the use of our products and must confirm adaptability thereof by their own tests. Liability will not exceed value of the material sold. We reserve the right to employ various new technologies due to advances in the polyethylene industry which may alter the structure or configuration of material used to manufacture products. This does not void or change our warranty; the products supplied will function in a satisfactory manner.

Legal

Prices are subject to market changes and raw material price fluctuations. Prices quoted are firm for 30 days unless otherwise noted. Custom bags are subject to +/- 25% quantity unless otherwise agreed to in writing. All products are subject to +/- 5% overall tolerance.

Aluf Plastics
2 Glenshaw Street
Orangeburg, NY 10962

PRESORTED
STANDARD
U.S. POSTAGE
PAID
PERMIT NO. 994
SYRACUSE NY



Phone: **800.394.BAGS (2247)**

Fax: **845.365.2294**

Email: **info@alufplastics.com**

Web: **www.alufplastics.com**



Aluf Plastics – New York

2 Glenshaw Street
Orangeburg, NY 10962

Aluf Plastics – Texas

1212 Elm Street
Sulphur Springs, TX 75482

